

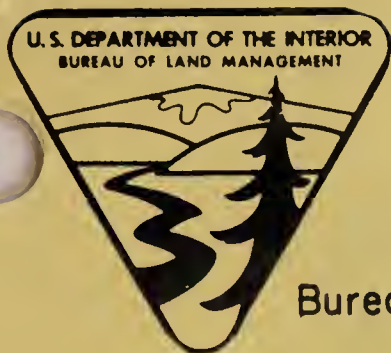
1059521094

ID: 88074124

TN 108

Mailing List 1

QL
84.2
L35
no. 108



TECHNICAL NOTE

Filing Code 3500

Date Issued 6/70

Bureau of Land Management U.S. DEPARTMENT OF THE INTERIOR

Subjects: Coal, Bituminous, Information
Coal, Bituminous, Statistics
Coal, Bituminous, Data

References: National Coal Association, Coal Building,
Washington, D. C. 20036 --

Bituminous Coal Facts. Published yearly, free.
Bituminous Coal Data. Published yearly, 1967 Edition,
cost \$3.00.

Data: These are two excellent references on general information concerning bituminous coal. Bituminous Coal Facts (a free publication) is particularly recommended for offices managing coal resources. It contains information on reclamation, research and other fuels besides coal data.

The table of contents and index for recent editions of these publications are attached.

Please send any additional references on this subject or other minerals subjects to DSC (D-310). If the complete article or publication is needed, DSC (D-310) will attempt to obtain a copy or a loan for you.

BITUMINOUS COAL DATA

1967



NATIONAL COAL ASSOCIATION

TABLE OF CONTENTS

Section	Page
SALIENT STATISTICS	1
PRODUCTION	17
MANPOWER & SAFETY	33
MACHINES & EFFICIENCY	49
CLEANING, CRUSHING & DRYING	63
VALUE & PRICES	71
COAL MARKETS & STOCKS	77
COKE & STEEL	85
RESERVES	95
ENERGY PRODUCTION & FUEL USE	99
APPENDIX	109
INDEX	116

INDEX

C

Cleaning, crushing, drying	
cleaning, mechanical	
number of plants, by states	67
percent of total production, 1900-1966	9
raw coal and refuse	65
tons cleaned, by method	67
tons cleaned, by states	65
tons cleaned, wet method, by process	68
by type of mine	66
crushing, mechanical	
number of mines crushing	68
tons crushed	68
dust treatment, by process	69
thermal drying, by states	69
Coal producing districts	
description	113-115
map	111
Consumption	
bituminous coal	
by consumer class, retail deliveries	
by months and years	82
by electric utilities	107
coke	
apparent domestic use, imports, exports, used in iron furnaces, all other uses	89
fuel oil	
coal-competitive uses, in trillion Btu	105
by electric utilities	107
sales of distillate, by use	108
sales of residual, by use	108
mineral energy resources and electricity	
from water and nuclear power	
in original units	104
percent share of market	104
excluding non-coal competitive uses	
in trillion Btu	105
percent share of market	106
natural gas	
coal-competitive uses, in trillion Btu	105
by consumer class	107
by electric utilities	107
nuclear power	104
water power	104
Conversion factors	112

D

Days and man-days worked

days worked

all mines

by districts 39

by states 39

by years 38

1900-1966, by years 8

production per day worked 38

auger mines, by years 38

strip mines

by states 40

by years 38

underground mines, by years 38

man-days worked

all mines

by districts 41

by states 41

strip mines, by states 42

underground mines, by states 42

number of working days in year 38

Distribution of coke

produced at oven and beehive plants

by end use 91

E

Earnings, coal and selected industries

hourly 45,47

weekly 46,47

Electric utilities

fuel consumption 107

generation, by each fuel, water power 102

percent generated by fossil fuels,
water, nuclear power 103

Employment

all mines

by districts 36

by states 36

1900-1966, by years 8

auger mines

by states 37

by years 35

strip mines

by states 38

by years 35

underground mines

by states 37

by years 35

Equipment	
strip mines	
power shovels, dragline excavators	
by states, by years	60
by type, capacity	61
haulage to tipple or ramp, by method	61
underground mines	
coal cutting machines, by states	52
output per machine	53
gathering and haulage conveyors	58
haulage units, by type	59
mechanical loading devices	
in use, by type	56
number of mines using	54
units purchased, by type	59
 Exports of bituminous coal	
by continent of destination	79
by country of destination	80,81
1900-1966, by years	9

F

Federal taxes, net income of coal corporations	12
--	----

H

Hours worked, weekly	
coal and selected industries	44

I

Imports of bituminous coal	
by country of origin	79
1900-1966, by years	9
 Injuries, fatal and non-fatal	
number; rate per million man-hours;	
rate per million tons	43

L

Lignite	
salient data, by states	13-15

M

Markets

See Consumption, Exports

Mechanical loading, underground mines

growth of, by method	55
hand-loaded onto conveyors, by states	58
loaded by machines, by states	57
mechanical loading units in use, by type	56
mechanically loaded	
by states	56
percent of underground production, 1900-1966	9
number of mines using mechanical loading devices	54

Methods of mining, underground mines

continuous mining machines	
by states	53
by years	51
percent of underground production, 1900-1966	9
cut by hand, shot from solid	
by states	54
by years	51
cut by machine	
by states	52
by years	51
percent of underground production, 1900-1965	9
output per coal-cutting machine, by states	53

Mines, number of

all mines	
by districts, states	20
1900-1966, by years	8
auger, by states	22
strip, by states	21
underground, by states	21

N

Net income, federal taxes of coal corporations	12
--	----

P

Prices

price indicators of bituminous coal	73
wholesale price index, fuels, lighting	76

Production

bituminous coal

all mines

cumulative, by states	11
daily average	38
by districts, states	25
maximum year, by states	11
monthly	23
not sold in open market	26
peak week, by years	23
by size of mine output	19
weekly, 1964-1967	24
1900-1966, by years	8, 10

auger mines

by states	28
1900-1966, by years	10
percent of total production, 1900-1966	9
captive mines, consumer-owned	26

strip mines

by states	27
1900-1966, by years	10
percent of total production, 1900-1966	9

underground mines

hand-loaded, by states	57
by methods	51
by states	27
1900-1966, by years	10
percent of total production, 1900-1966	9

coke

oven and beehive

by states	89
by years, by producer source	88
coal carbonized at coke plants	87

crude oil 98

lignite 13-15

natural gas 98

other fuels and energy

electricity by fossil fuels, water, nuclear	102
percent kWhrs. generated by fuels, etc.	103

mineral energy resources and electricity

from water and nuclear power

in original units	102
in trillion Btu	101

nuclear power 102

water power 102

raw steel

by months and quarters 93

by years 93

Productivity	
per day (tons per man)	
all mines	
by districts, states	29
at U.S. and European mines	28
1900-1966, by years	8
auger mines, by years	28
strip mines	
by states	31
by years	28
underground mines	
by states	30
by years	28
per year (tons per man)	
all mines, 1900-1966	8

R

Received, coal at oven coke plants	
total and captive	
merchant and furnace plants	87

Reserves

bituminous coal and anthracite	97
crude oil	98
natural gas	98

S

Sales

distillate oil, by use	108
residual oil, by use	108

Stocks of bituminous coal

consumer plants, retail yards	
days' supply, by months and years	84
tons, by months and years	83

Stocks of oven coke (producers')

by months	90
by years, as of January 1	90

V

Value of bituminous coal

per ton, f.o.b. mine	
all mines	
by districts, states	74
1900-1966, by years	8
by type of mining	73
sold in open market, by states	75
not sold in open market, by states	75
total value, 1900-1965, by years	8

AUG 21 1968
DENVER

Bituminous Coal Facts 1968



National Coal Association
Coal Building
Washington, D. C. 20036

5 Bituminous Coal and Energy
Statistical Index, Page 57

13 Markets
Statistical Index, Page 67

17 Coal and the Atom

21 Research

27 Production
Statistical Index, Page 81

33 Transportation
Statistical Index, Page 91

37 Reclamation

41 Manpower and Safety
Statistical Index, Page 97

45 Reserves
Statistical Index, Page 103

49 National Coal Association
Officers and Directors, Page 52
NCA Staff, Page 54

**56 National Coal Operators
Associations**

NOTE: 1967 figures herein are preliminary. Some totals may not add due to rounding.

Permission is granted to republish material presented herein, provided credit is given the National Coal Association and other indicated sources of information.

Bituminous Coal and Energy

Statistical Index

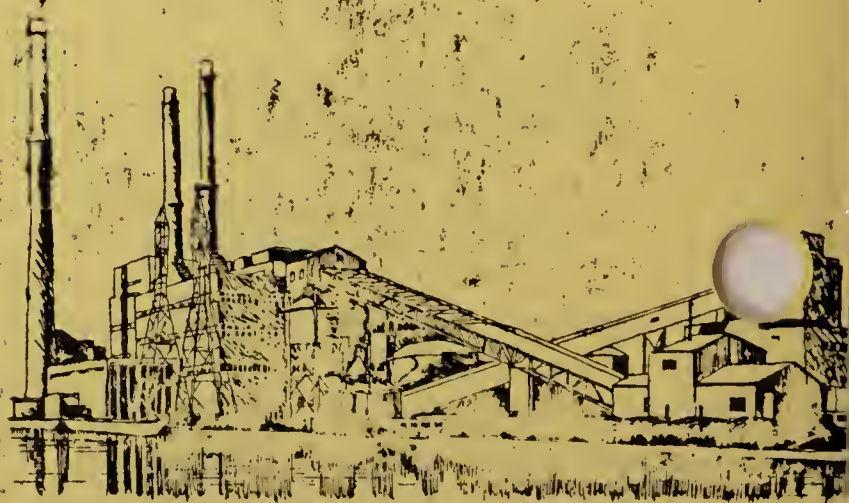
- 58 Growth of the Bituminous Coal Mining Industry in the United States
- 60 U. S. Production of Mineral Fuels and Electricity from Water and Nuclear Power, 1920-1967 (In Original Units)
- 61 U. S. Production of Mineral Fuels and Electricity from Water and Nuclear Power, 1920-1967
- 62 U. S. Production of Mineral Fuels and Water Power, by States, in 1966
- 63 U. S. Consumption of Energy Fuels and Electricity from Water and Nuclear Power, 1920-1967 (In Original Units)
- 64 U. S. Consumption of Energy Fuels and Electricity from Water and Nuclear Power, 1920-1967
- 65 U. S. Consumption of Energy Fuels and Electricity from Water and Nuclear Power, 1920-1967
- 66 Fuel and Power Conversion Factors



Markets

Statistical Index

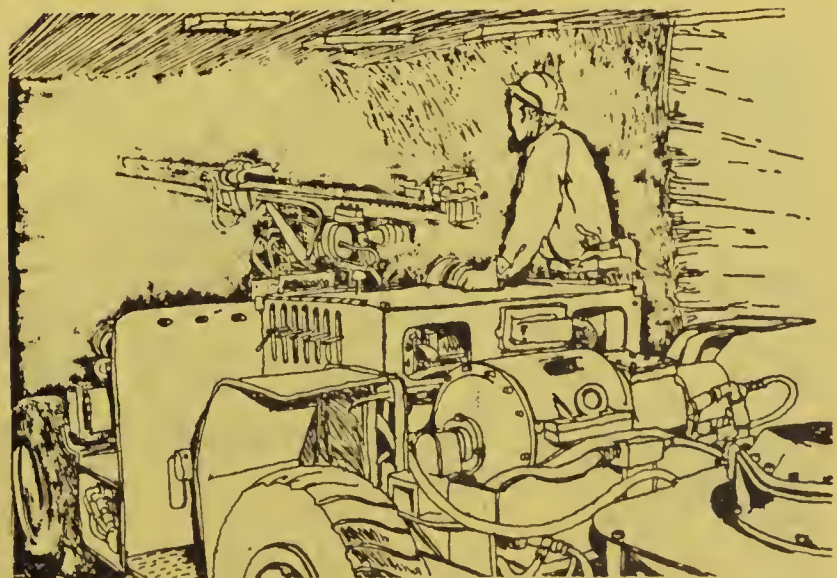
- 68 United States Consumption and Exports of Bituminous Coal
- 69 Use of Bituminous Coal and Other Energy Sources in the United States
- 70 Distribution of Bituminous Coal During 1967
- 73 Steam-Electric Plant Fuel Consumption and Unit Costs, by Regions, 1961-1966
- 74 Steam-Electric Plant Capacity, Net Generation, Fuel Consumption, and Unit Costs by Regions and States, 1966
- 76 Bituminous Coal, Average Value Per Ton, F. O. B. Mines, by States, 1939-1966
- 78 United States Exports of Bituminous Coal, by Country of Destination and Continental Group, 1963-1967



Production

Statistical Index

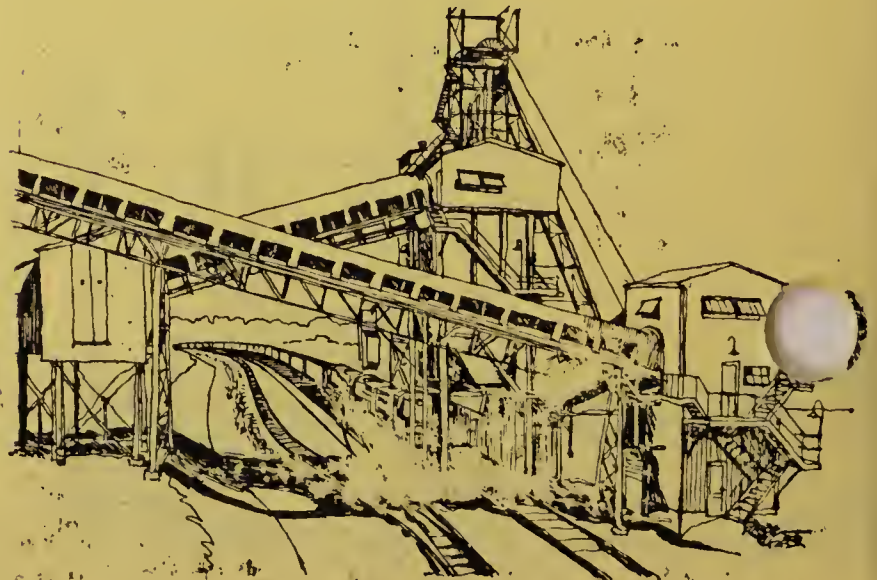
- 82 Production of Bituminous Coal, by States, 1939-1967—
All Types of Mines
- 83 Total Production of Bituminous Coal, by Districts, 1939-
1967
- 84 Underground and Surface Production of Bituminous Coal,
by States
- 85 Production of Bituminous Coal by Method of Mining
- 86 Number of Bituminous Coal and Lignite Mines in the
U. S., by States
- 88 Bituminous Coal Production from Consumer-Owned
(Captive) Mines
- 89 Output Per Man Per Day at U. S. and European Coal
Mines
- 90 50 Biggest Bituminous Coal Mines in the U. S. Rated
According to Tonnage Produced in 1967



Transportation

Statistical Index

- 92 Shipments of Bituminous Coal to All Destinations in the United States, Canada, and Mexico, by Method of Movement and Consumer Use, 1961-1967
- 93 How Bituminous Coal Moves from Mines
- 94 United States Rail Transportation of Bituminous Coal, 1967
- 95 Bituminous Coal Freight Traffic, A Major Source of Railroad Revenues, 1928-1967
- 96 Railroad Revenue Per Ton and Ton-Mile For Hauling Bituminous Coal



Manpower and Safety

Statistical Index

- 96 Average Number of Men Employed in Bituminous Coal Mines, by States, 1939-1966
- 96 Average Hourly Earnings in Coal, Other Industries, 1939, 1967
- 100 Bituminous Coal Industry Fatal and Non-Fatal Injury Rates Per Million Man-Hours



Reserves

Statistical Index

- 104** Estimated Remaining Coal Reserves of the World
- 106** Coal Reserves of the United States
- 107** Estimated Proved Reserves of Petroleum and Natural Gas

